



**FINISHED POUCH SIZE**  
12" W x 12.5" H x 3.5" Gusset

**AI DOCUMENT SIZE**  
12" H x 28.5" W  
This is the size of the artboard in Illustrator.

**BLEED SETTINGS**

Top: 0.0"  
Bottom: 0.0"  
Left: 0.0787" (2mm)  
Right: 0.0787" (2mm)  
File → Document Setup...

Do not add bleed measurements to overall document size.

**COLOR**

Your file must be in CMYK (Process), without RGB or spot colors (except the white ink spot color).  
File → Document Color Mode → CMYK Color  
All black must be 100% black (C0, M0, Y0, K100). Do not use [Registration] or rich black.

**TEXT**

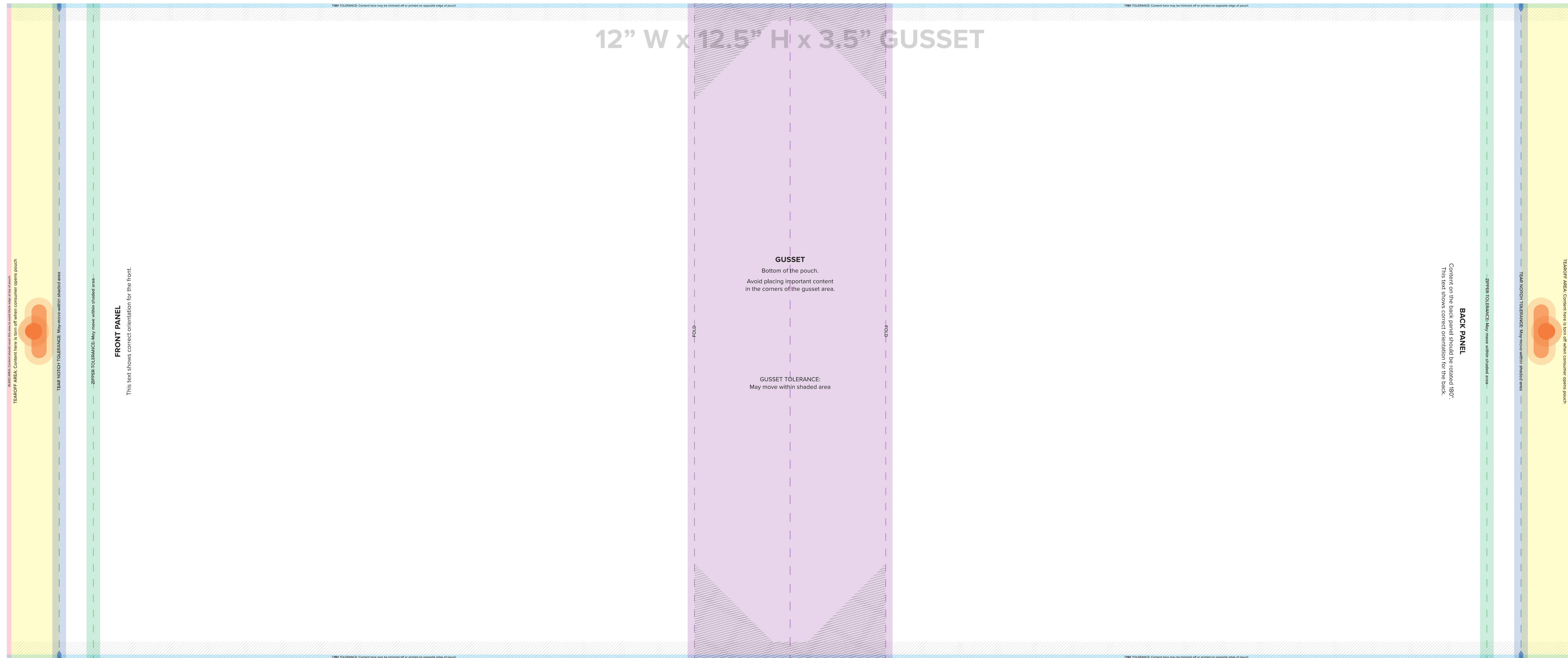
All text in your file must be outlined.  
Select → Object → All Text Objects  
Type → Create Outlines

**IMAGES**  
Embed all images in your file.  
Images should be at least 300dpi.

**FINAL PDF SETUP**

Turn off all non-printing layers (templates, printer's marks, etc.)  
File → Save As... → Adobe PDF  
Adobe PDF Preset: [PDFX-1a:2001]  
Compatibility: Acrobat 7 (PDF 1.6)  
Marks: Uncheck All Printer's Marks  
Bleeds: Check Use Document Bleed Settings

**DO NOT RESIZE OR ROTATE THE ARTBOARD. THIS TEMPLATE IS SET UP TO BE PRINT-READY. PLACE YOUR CONTENT IN THE "ARTWORK" LAYER.**



**WARNING**  
We recommend placing only a solid color or a seamless pattern within the trim tolerance area to avoid artwork printing on the opposite edge of the pouch.  
Artwork placed inside the trim tolerance area will NOT warrant a reprint of your order.

**ORDERING CLEAR OR METALLIZED?**  
Clear and metallized films may need a layer of white ink under your artwork.  
Turn on the "Premium White" layer to see instructions for setting up your white layer.

**QUANTITY TOLERANCES**  
Our production can vary ±10% of the quantity you order. We recommend padding your order to account for this.  
If we ship less than your desired final quantity, a credit will be issued to your customer account.  
If we ship more than your desired final quantity, the surplus is free of charge.