



FINISHED POUCH SIZE

5.75" W x 7.5" H x 2.5" Gusset

AI DOCUMENT SIZE

5.75" H x 17.5" W
This is the size of the artboard in Illustrator.

BLEED SETTINGS

Top: 0.0"
Bottom: 0.0"
Left: 0.0787" (2mm)
Right: 0.0787" (2mm)

File → Document Setup...

Do not add bleed measurements to overall document size.

COLOR

Your file must be in CMYK (Process), without RGB or spot colors (except the white ink spot color).

File → Document Color Mode → CMYK Color

All black must be 100% black (C0, M0, Y0, K100). Do not use [Registration] or rich black.

TEXT

All text in your file must be outlined.

Select → Object → All Text Objects
Type → Create Outlines

IMAGES

Embed all images in your file.
Images should be at least 300dpi.

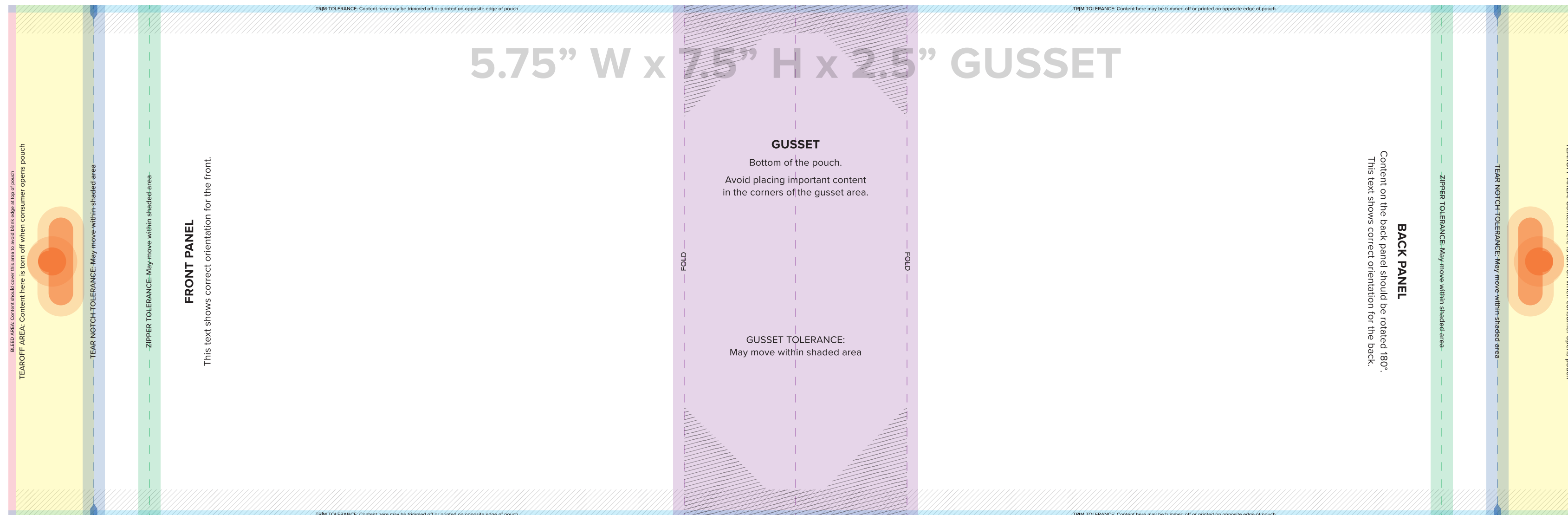
FINAL PDF SETUP

Turn off all non-printing layers (templates, printer's marks, etc.)

File → Save As... → Adobe PDF

Adobe PDF Preset: [PDF/X-1a:2001]
Compatibility: Acrobat 7 (PDF 1.6)
Marks: Uncheck All Printer's Marks
Bleeds: Check Use Document Bleed Settings

DO NOT RESIZE OR ROTATE THE ARTBOARD. THIS TEMPLATE IS SET UP TO BE PRINT-READY. PLACE YOUR CONTENT IN THE "ARTWORK" LAYER.



WARNING
We recommend placing only a solid color or a seamless pattern within the trim tolerance area to avoid artwork printing on the opposite edge of the pouch.
Artwork placed inside the trim tolerance area will NOT warrant a reprint of your order.

ORDERING CLEAR OR METALLIZED?
Clear and metallized films may need a layer of white ink under your artwork.
Turn on the "Premium White" layer to see instructions for setting up your white layer.

QUANTITY TOLERANCES
Our production can vary ±10% of the quantity you order. We recommend padding your order to account for this.
If we ship less than your desired final quantity, a credit will be issued to your customer account.
If we ship more than your desired final quantity, the surplus is free of charge.